



MINUTES
Board Meeting
Land Park Community Association

Eskaton Monroe Lodge
3225 Freeport Boulevard
October 18, 2017 - 6:30 p.m. -8:30pm

Board members:

- Present: Steve Winlock – President, Craig Rutledge - Vice President, Mitch Rohrer - Treasurer, Alison Leary - Secretary, Pinki Cockrell, Stephanie Duncan, Shannel LaDue, Joleen Lonigan, Lisa Riley, John Schade, Art Taylor.
- Absent: Steve Walker, Dana Moore.

6:35 pm- Steve Winlock called the meeting to order

1. Jerry Champa - Crosswalk and Traffic Update.

- a. Jerry provided a brief presentation about traffic issues in the area that he would like to give at a community meeting in the future.
- b. There are new funds available for proactive safety improvements to streets, and the City recently received a "systemic safety" grant to do traffic planning.
- c. The traffic planning process will involve the city identifying areas that are "high risk" and developing a plan to fund projects based on priorities.
- d. Jerry met with Megan Carter, who is in charge of the contract for the study to discuss issues related to Land Park Drive.
- e. Jerry and Art will draft letter to the city on behalf of the LPCA Board to requesting that the LPCA be involved in the planning process.

2. Update on Holiday Party:

- a. The holiday party will be on December 9th from 2 to 4.
- b. Most of the programming is in place, but Shannel needs help getting the contact info for some of our musicians. Steve Winlock will send Shannel the information.
- c. LaBou will be donating food.
- d. Santa Claus will come for the second half of the party. Holy Spirit Choir will sing during his visit.

- e. Once the schools are finalized, we can circulate the flyer.
- f. Shannel will contact McClatchy and City College to see if they have an upbeat act to perform.
- g. Shannel and Lisa stressed that it is important to make sure that we don't have too much on the program.
- h. Shannel and Lisa will work on setting up a donation drive for the Sacramento Children's Home. Lisa will contact them.

3. November 15th Community Meeting.

- a. Craig has contacted SHRA, who will give a 30 minute presentation at our next meeting. Craig will send them the questions that we've gathered so far.
 - i. Art wants the presentation to be a "base level" presentation, focusing on what, if anything, has changed since their last presentation.
 - ii. The biggest questions we have are (1) what is the timeline; and (2) what will the public input process involve.
- b. Steve Hansen will give a 30 minutes presentation as well.

4. Grants.

- a. The budget for the grants committee is supposed to be a percentage of TOLP and Membership dues. For this year, we have \$5,000 allocated, but we should consider working out the percentage in the near future.
- b. The grants committee has reviewed 2 applications so far: the Swanston fountain project from the LPVC, and the food literacy project.
 - i. The grants committee recommends that we provide \$1,500 for the fountain.
 - ii. Lisa will bring the food literacy project back to the committee.
- c. For this year, the Grants Committee set the grant deadline of October 30th. However, the Grants Committee recommends that we have two deadlines throughout the year (possibly March/April and October).
- d. There are several more applications for the committee to consider: Fairytale town has already submitted. Lisa anticipates there will also be 2 more applications. The Grants Committee will meet before the next community meeting to discuss the applications received.
- e. John, Dana, Mitch, Craig, and Alison are on the committee with Lisa.

5. Door hangers.

- a. We have 10,000 door hangers. We are going to target South Land Park Terrace, South Land Park Estates, Upper Land Park, and the Mill. Stephanie will work on the maps and see how the best way to handle it will be.

6. Cannabis discussion.

- a. There is a workshop being held on Wednesday, October 25th at 5:30 p.m. At Sierra 2 Center. Craig and Steve will attend the meeting and report back.
- b. We would like to schedule a larger cannabis discussion and information session for our members so we can get their feedback on what type of position the LPCA should take.

7. LPCA involvement in Security and Safety Patrols.

- a. There was a discussion about whether or how the LPCA should be involved in this issue.
- b. Katy Grimes, who organizes one of the patrols, will be coming to the LPCA Safety and Security meeting on November 14th to explain their relationship with Paladin. Mary Barbara Falcon from SacPD will also give a presentation about neighborhood watch. Finally, the police will give presentation.
- c. The board agreed that providing information and contact information for people who are interested should be the extent of our involvement. We do not have the capacity or the resources to do more than that.

8. Partnership with McClatchy and other nearby schools.

- a. Steve met with the McClatchy PTSA to discuss how we can support one another, for example: volunteer opportunities for students, grant issues, advertising in one another's newsletters, getting members involved on senior project panels at McClatchy.
- b. Stephanie met with Crocker Riverside PTO to discuss similar issues.
- c. The consensus of the board was that we should be sharing information with one another. Creating more involved partnerships was discussed, but not decided upon.
- d. Art mentioned that we should also be partnering with other organizations, like LPVC.

9. Amphitheater meeting with Steve Hansen.

- a. Steve Winlock, Pinki and other representatives are meeting with Steve Hansen to discuss the \$1 million dollars that was allocated to the amphitheater project. The meeting is on October 26th from 1-2 p.m. at City Hall.
- b. The \$1 million dollars will be the total for the renovation, not the \$2.5 million originally proposed.

10. Board internal communications.

- a. Alison will circulate information about Slack.com so that we can beta test it.

11. Treasurer's report.

- a. We are currently operating at a deficit and it is unclear what expenses are allocated in each of our current budget categories.
- b. Mitch will try to get a better sense of our budget by talking with Art and Craig about A Taste of Land Park.
- c. In the future, we need to keep better track of our expenses so that we can ensure that we have an accurate budget.

12.A Taste of Land Park.

- a. Steve would like to explore the possibility of allowing businesses to have booths at A Taste of Land Park.

13.Short term rentals.

- a. A resident in the community is concerned about the use of a neighbor's house as a short term rentals and wants the LPCA to take a position.
- b. The Board discussed the issue and decided that, since the city already has a short term rental ordinance in place, there isn't much we can do.
- c. Our role here should be to provide information about the ordinance.

14.Donating to the Santa Rosa fire donations.

- a. Art proposed that we donate to the Santa Rosa fires. The board discussed the issue and decided that we should individually consider donating, that it would be inappropriate for the LPCA to donate our members' money, especially since we're already operating at a budget deficit.

Meeting closed at 8:40 p.m.

LPCA Board Meeting
October 18, 2017

Safety Needs & Opportunities Affecting the Land Park Community

Jerry Champa, PE
LPCA Public Safety Committee

Traffic Safety Needs & Opportunities

- **Are Land Park's streets & intersections safe?**
 - Depends on who you ask
- **What are safety *needs*?**
 - *Problems versus Risk (i.e. relative potential for injury)*
- **Opportunities ★ (NEW!) ★**

Traffic Safety Needs & Opportunities

~~—Are Land Park's streets & intersections safe?~~

HOW safe are Land Park's streets & intersections?

- For drivers and vehicle occupants
- For those who walk (and jog)
- For those who cycle

- Traffic Safety is typically measured by crash frequency & severity
- **Safety Performance is Relative; there are no absolutes**

Traffic Safety Needs & Opportunities

What are safety *NEEDS*?

- **Safety Problems (hot spots) versus High-Risk Conditions**
 - Locations with *significant potential* for crashes
- How are needs identified? addressed? funded? by whom?
- **What kind of *needs* merit action & investment of capital funding?**
 - Examples (Any within Land Park?)

Traffic Safety Needs & Opportunities

OPPORTUNITIES

- Special Citywide Safety Study
 - *Systemic Safety Analysis* → **NEW!**
- **Expanded Funding via SB1** → **NEW!**
 - Additional \$1.5 Billion for Local Streets & Roads
 - Additional \$100 Million for Active Transportation Program
- Other Programs → Especially Pavement Resurfacing

New Opportunity: City-wide *Systemic Safety Study*

Why Important to Land Park?

- New program / approach is groundbreaking ...
 - Safety Needs based on High-Risk Conditions (not just crashes)
 - Safety Funding can now be invested prior to reaching “body count”

New Opportunity: Citywide Systemic Safety Study

Why Important to Land Park?

- Safety Needs based on High-Risk Conditions (not just crashes)
- Needs may be eligible for various Funding Programs & Project Types
 - More \$ than ever
 - \$1.5 Billion for Local Streets & Roads (much for pavement)
 - \$100 Milion for Active Transportation Program

New Opportunity: Citywide Systemic Safety Study

Status of City's *Systemic Safety Analysis Report* Contract

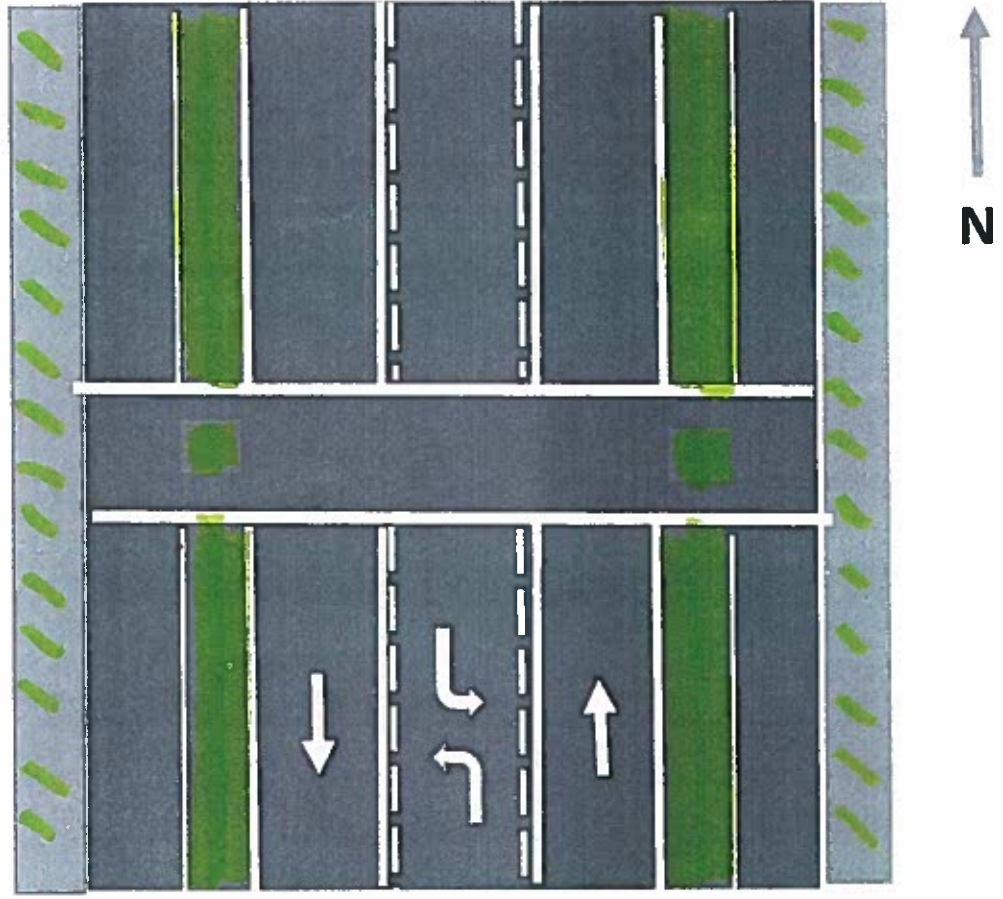
- Consultant Selection underway
- Work may start in mid-December or January
- Deliverables: **List of Candidate Safety Projects and Needs**
- ***Planned Outreach ...?***
- ***What is potential role of LPCA?*** (Board, Members, Residents)
 - **Advisory, but direct role to point out higher-risk locations**
 - a "seat at the table" (to get a piece of the pie)


Pedestrian Crosswalk
At Intersection or Mid-Block
(with or without "modern" flashing beacon warning system)


How is the need established?

1. What is the crossing distance?
 - Freeport Blvd = 48'
 - Land Park Drive = 68'
2. What is approaching vehicle speed?
 - Freeport Blvd = 30-35 MPH
 - Land Park Drive = 30-40 MPH
3. What are the conflicting (pedestrian versus vehicle) volumes?
 - Freeport Blvd → depends
 - Land Park Drive → depends

So, why not needed on LDP?



 BIKE LANE

 EXISTING SIDEWALK



Oct. 2017-LPCA Public Safety Committee Meeting

1. LP Dr. & Riverside Blvd. Safety Improvements & Crosswalk Safety-Being researched, contacting City of Sacto. Departments that have knowledge of CalTrans Grant, pertaining to studies, which affect Land Park. Jerry Champa has been instrumental in bringing new ideas and suggestions to this focus.
2. Fall Safety & Security Presentation planned for Nov. 14, 2017, Tuesday, 6:20-8 pm, Crocker Riverside Elem. Auditorium. Presentations include Sac. PD with Sgt. Brent Kaneyuki, Problem Oriented Policing, Mary Barbara Falcon, Sac PD Training with Neighborhood Watch 101 and Emily Hannon/Katy Grimes, Private Security Patrols. All with Q&A. Questions will be solicited on ND.
3. SHRA Presentation. No date yet, as Steve Winlock was to liaison with Hansen/SHRA, date/time/make-up. I also suggested a Neighborhood (LP) Forum, to include SHRA intro. /overview, pre-selected questions, Q&A. 11 questions of 46 for SHRA Selected & Submitted to Winlock & Board.
4. Parking by Parents/Friends who drop off & pick up CKM students in marked NO PARKING areas, continues on 7th, 8th Ave. near Freeport are most impacted. City Parking Enforcement assisting, making positive impact. Mitch can testify. Also concerned and contacted Parking Enforcement, for Illegal Parking on Vallejo Way, in front of Cal Middle School. I continue to take pictures and contact CKM, City PD, Parking Enforcement, Jay Hansen, SCUSD Board Pres., etc.
5. Stephanie and Curtis Park Comm. Assoc. hosting Homeless Presentation, Oct. 23, Mon., at Sierra II, 6:30-8 pm. Many speakers/experts to provide info. Note that new LP Face book organization, continue to grow, concentrate on LP, Sacto. Issues, and contacting City and other officials responsible for fixing issues.

LPCA QUESTIONS TO SHRA 9/17'

1. What portions of the SHRA's TRANSPARENCY STATEMENT does SHRA abide by?

Transparency

Sacramento Housing and Redevelopment Agency is committed to openness, transparency, accountability and responsiveness as we work to provide a broad range of services and programs for residents and communities in the City and County of Sacramento.

We highly value the public's trust in our performance as a public agency. We seek to inform and engage all stakeholders in our communities and neighborhoods by providing timely information and access to reports, documents, and opportunities which will enable the public to take an active role in the decision making process.

2. Upper Land Park (ULP) is already absorbing an abnormally high number of PH Units, in which the 751 units of the LP PH make up 44% of Sacramento's PH. Per the national standard of what is considered healthy for a community, how is increasing this number going to enrich the lives of those impacted?

3. Should Sacramento PD have a presence or sub-station at the LP PH in ULP as they did in the past. Why or why not?

4. Do you agree that the existing over-concentrated public housing in this one little area has caused decades of major problems and costs for this community and Sacramento. Why or why not?

5. All across this country, States are moving towards more modern and successful subsidized housing models for the poor, including scatter site and housing voucher programs that integrate low income in a number of economically viable communities, with smaller numbers in any one area. Should these more modern and successful models be used? Why or why not?

6. How many and where are the other affordable housing and public housing units throughout the City?

7. Will equal size units for Homeless/Low/ No income/large families be available at the relocation sites, and in the final inventory of the rebuilt neighborhood? (The report indicated smaller units.)

8. Why has Land Park specifically been designated to receive this expansion?

9. Is it likely, or not, that money for this project expansion will be included in the projected HUD agency budget given the current emphasis for more infrastructure and defense spending by the current Administration?

10. In addition to the questions set forth I would want to know if SHRA has considered the impact on the local schools of the addition of 400-600 new homes and how many children would there be in each of the schools-elementary, middle and high school?

11. How many Market Rate vs. Affordable vs. Public Housing vs. Homeless Units will there be in the finished product, breakdown of each?

Post in Crime & Safety

Inline image

Art Taylor, Land Park

Incident in ULP. Posting in ULP, LP ND

Posting this recent incident which occurred on or near the Alder Grove/Marina Vista Land Park Public Housing. This affects ULP, LP and surrounding neighborhoods. Please note: Sac PD, Steve Hansen, SHRA.

1d ago · 2 neighborhoods in Crime & Safety

Inline image

Reply

Inline image

Cindy Bulfinch, Land Park · 1d ago

I heard them earlier as well. Not sure what time this was but I heard one series of rapid fire around 8-8:39 I think. Went to bed early, so not sure, but I'm at 7th Ave and Riverside. Heard them clearly but then nothing!

Inline image

Inline image

Thanked!

Inline image

Craig Chaffee, Upper Land Park · 1d ago

Gunshots at public housing, PH tenant reporting major speeding and drug use at the other PH very nearby, prostitution and drug use on nearby street, barbie dolls stolen from family - all this week in 'Upper' Land Park. Sound like 'ULP' is an up and coming (apart) area. Course it's just negative people making stuff up, I'm sure. SHRA and others say everything is just fine.

Inline image

Inline image

Thanked!

Michael Lee

Michael Lee, Upper Land Park · 18h ago

^ Exactly. Our cars, garages, outbuildings and homes are broken into on a regular basis and packages are stolen off our front porches. Heroin needles, blunt rolling paraphernalia and condom wrappers have been found on Santa Buena. Yesterday, a man was arrested by SPD for kidnapping on the corner of Broadway and Riverside. Two weeks ago, an elderly woman had rocks thrown at her car and house on 4th Ave. A day before, at 5 o'clock in the morning, there was a brawl between seven kids near the corner of 5th and McClatchy. A few days before that, a man with two outstanding felony warrants was arrested by SPD on Santa Buena for stocking a woman that was out for a walk. A few weeks before that, kids kicked-in a woman's front door while she was pushing her babies in a stroller nearby. Another neighbor had her screen door kicked. A month before that, a brick was thrown through someone's bedroom window and another brick thrown through someone's windshield. A few months before that, when SPD placed a mobile police observation device (POD) at the intersections of Vallejo/5th/San Luis CT, heavily armed gang members were arrested and a stolen car was recovered. Housing project tenants helped the police capture the gang members. Yes, way to go! A month before that, SPD arrested a drug dealer that was armed with a 40 caliber handgun. This is all easily fact checkable because everything was reported on Nextdoor, Land Park Society Facebook Group and the SPD daily crime log. Are we not supposed to discuss these matters simply because the housing projects were involved in some of these events? Are we not supposed to adequately address serious crime and safety issues in ULP/MVAGHPs because that automatically makes us racist and elitist? Nonsense. The vast majority of people that live in the housing projects are incredibly high quality human beings that are working extremely hard in difficult conditions to better themselves and their families. I have a lot of respect for you. At the ULP safety meeting last January we were told by the director of SHRA that 99% of the crime that occurs at the housing projects is perpetrated by people that are living there illegally and have never gone through the thorough vetting process. The director stated that SHRA does not have adequate resources to conduct regular searches to oust criminals. I believe that. It is undeniable that

there is a criminal element operating at the housing projects that is causing serious problems. If you live in the housing projects you have a right to stand up for yourselves and live in a clean and safe neighborhood. The police work for you. They work for all of us. It is their job. So, I ask again, does anyone know what happened? Was there a drive-by shooting or was it just hooligans speeding around blasting off their guns for fun? I cannot help but notice that a lot of people who live in the housing projects have recently joined Nextdoor. Clearly, you have joined for a reason. Please share with us your opinion? Do you have crime and safety concerns? We are all on the same team. We all want to live in a clean and safe neighborhood. If you disagree with my writing and would like to label me as a racist and elitist you are welcome to do that. It will not be the first time I have been stereotyped on Nextdoor. I am used to it now. It would be prudent of me to mention that my father grew up in housing projects that were converted from an old navy shipyard in the Bayou in southern Louisiana. I am only one generation removed from the housing projects so it is not like I am speaking from a status of great prestige and privilege.

Inline image

Inline image

Thanked!

Inline image

Cindy Bulfinch, Land Park · 17h ago

The SHRA is responsible for those so called "illegal" tenants. They do the vetting! How dumb are we. Well said Michael. Most people there are good people struggling to do better. They need to help us stop this madness. I'm sure they are afraid if retaliation. I would be. Anyone wanting to PM me, please do. That's more confidential. We must stop this madness! I truly feel for those there with small children. They don't have a chance unless their parents (?) step up and step in.

Inline image

Inline image

Thanked!

Inline image

Thomas Barnes, Land Park · 17h ago

Thank you Michael and Cindy for not being afraid to expose the facts! I also, have been called a racist for frankly discussing the real and escalating problems that we all face and are forced to live with in the areas close to the projects! You can thank prop 47, prop 57 and AB 109 which has basically allows the crooks to steal \$960 and only receive a ticket and if jailed they can be assured of early release! These liberal insane laws coupled with liberal politicians who are more interested in political correctness than the welfare of the tax paying citizens, and the growing homeless and drug problem, makes the situation intolerable!

Inline image

Inline image

Thanked!

Inline image

Craig Chaffee, Upper Land Park · Edited 2h ago

Newer laws, etc. cannot be blamed for the majority of the problems with these projects. There have been major problems resulting from these huge SHRA projects for the last 4 decades. There are about 2500 folks with a lot of needs crammed into these old style government projects - a proven ineffective and harmful housing model. Many in Land Park community are only becoming aware of many of these serious problems now magnified by more recent homeless and other issues. SHRA has not done an adequate job for a long time, yet wants to lead and add more such housing in this area that is already over-saturated. New leadership for such housing in Sacramento is needed.

Inline image

Transparency

Sacramento Housing and Redevelopment Agency is committed to openness, transparency, accountability and responsiveness as we work to provide a broad range of services and programs for residents and communities in the City and County of Sacramento. We highly value the public's trust in our performance as a public agency. We seek to inform and engage all stakeholders in our communities and neighborhoods by providing timely information and access to reports, documents, and opportunities which will enable the public to take an active role in the decision making process.

Organizational Structure
SHRA Organizational Chart
Job Description and Salary Ranges
SHRA 2017 Fact Sheet

October 18, 2017 LPCA PARKS UPDATE

- 1.) LPCA was invited to the 30th anniversary of the Old City Cemetery and historic Rose Garden.
 - a. LPCA is a patron and was recognized as such.
 - b. Parks Committee chair, Pinki Cockrell represented LPCA.
 - c. The introduction to Parks Director, Chris Conlin, was prefaced with acknowledgement that LPCA is engaged with all the parks within its boundaries, not just Land Park..
 - d. Future direction of other district parks was briefly discussed: the advisory committee to the Old City Cemetery and Rose Garden was appointed and would begin meeting in October, change in Southside Park by establishing a fund as in Land Park could generate more city park income, and parking meters will be installed in Miller Park which should further discourage car/RV homeless camping.
- 2.) The burned Funderland snack bar facility is an asset on the concessionaire, not the city. Their own insurance will be engaged, not city risk management funds. As of last week, the cause was not yet determined. Note that an article in Land Park News quoted the concessionaire as intending include a family restroom in the rebuild. I did not pursue the quote as the concessionaire previously said that he was considering converting a shed inside their boundaries into a restroom as the nearby city restroom was problematic.
- 3.) The October Parks "Committee meeting was cancelled as the issue to be vetted was the funding of the replacement of the burned restroom at the Village Green. Funds were to be from Measure U and the Park Development Impact Fee fund, the latter of which regional parks could access only since January. It was resolved that risk management funds would be used instead of the development fee funds. The Fence for the Tiny Tot program inside the playground was from the regular park operations funds.
- 4.) If no issues arise to be vetted at a, Parks Committee meeting, and in recognition of Veterans Day, the meeting the committee meeting the second Monday in November will be cancelled.
- 5.) Any parks related issues that members would like to see vetted at a future committee meeting may be directed to the committee chair at (916) 541-8426 or through the LPCA Web site. We are withholding conversation with the Zoo regarding renovation until the new director is appointed.

LPCA FY 2018 Budget
July 2017-June 2018

Storage Unit	1380
Web Hosting	1200
Committees:	
Parks	500
Membership	1000
Public Safety	500
Land Use	500

Events:	
Egg Hunt	1000
Taste Seed Money	1000
Membership BBQ	2000
Holiday Party	500
Movie in the Park	650

Grants	5000
Clerical/Bookkeeping	4800
Administrative Operations	4000
Board Retreat	1000
Communications	4720

Food 1500 music 500

LPVC 2500 was a budget line item
admin asst @ 400/mo
postage, stationary materials

advertising land park news & Inside Publication	1000
copies of monthly agenda for area business	50
Quarterly news letter design & 500 copies	2000
Doorhangers	720
postcard ads for area business dsitribution	200
Survey Monkey	300

Revenue	
Membership Fees	7500
TOLP	20000
Total	27500

Sub Total 4270

29750