



**MINUTES**  
**Board Meeting**  
**Land Park Community Association**

Eskaton Monroe Lodge  
3225 Freeport Boulevard  
**November 15, 2017 - 6:30 p.m. -8:30pm**

**Board members:**

- Present: Steve Winlock – President, Craig Rutledge - Vice President, Mitch Rohrer - Treasurer, Alison Leary - Secretary, Dana Moore, Stephanie Duncan, Shannel LaDue, John Schade, Art Taylor, Pinki Cockrell, Steve Walker. Lisa Riley arrived after roll call.
- Absent: Joleen Lonigan.

**Call to Order: 6:31**

**I. Consent Calendar:**

- A. Minutes of Previous Board Meeting (Alison Leary).
- B. Budget and Board Expenditure Report (Mitch Rohrer).
  - i. See Attachment 1.
- C. Mitch moved to approve the minutes and Treasurers' report, Pinki seconded the motion, and the motion passed unanimously.

**II. Announcements/ Presentations**

- A. Steve Winlock gave the President's report on what the LPCA has been involved in over the past month.
  - i. Steve attended a cannabis workshop where the City's cannabis representative, Joe Devlin, discussed the City's regulations and public process. Steve suggests that we have a cannabis regulation meeting at a community meeting;
  - ii. Steve, Pinki, and Art attended a stakeholder meeting about the amphitheater;
  - iii. Council Member Hansen held a public safety meeting at Cal Middle School to explain what is happening around public safety issues. Several board members attended.
- B. Steve Winlock thanked Noah's Bagels and Goodie Tutchews for the refreshment.
- C. Update from Council Member Steve Hansen:

- i. Homelessness/Alcohol and Drug Treatment: The City and County are working together to address the issue of homelessness. The County recently voted to spend \$44 million from their Mental Health Services Act fund in partnership with the City's whole person care grant to increase the services available to the homeless.
- ii. Land Park Boat Pond – The center island began to experience problems as they were filling the pond, so the contractor has to come back and fix it.
- iii. Q&A:
  1. There have been several crimes in Upper Land Park, presumably perpetrated by homeless individuals. Can you address?
    - a. Unfortunately, the long term fixes that the city has been focusing on, like whole person care, aren't helpful in the short term.
    - b. After prison reform, there are a lot of low level offenders who are now on the street. Steve Hansen's office is working with the DA to see if there is anything they can do.
    - c. Last night the City Council passed their aggressive panhandling ordinance and a parks ordinance to help Sacramentans feel safer in the community.
    - d. The most important thing we can do as residents is to communicate our stories to the other councilmembers and pass them onto police, so that the Council will act.
    - e. Steps that the City and County are taking to address the issue in the short term include: (1) the County will have 15 rental homes scattered throughout the County dedicated to homeless individuals, (2) the churches will continue to do the winter shelter program this year, (3) the City will open a 200-bed winter shelter as well, And (4) the City is funneling some of its housing vouchers to homeless people, who weren't previously eligible to receive them.
  2. How are we going to enforce the new ordinances?
    - a. The city is actively recruiting police officers, because we have a lot of vacancies, and are hopeful that with more officers and more resources they will be able to best address the problems more effectively.
    - b. The city is considering increasing the number of park rangers in the parks, as well, and is exploring the possibility that they can be crossover police officers so that they have more authority.
    - c. The City has entered into an agreement with the AM/PM to help enforce their trespass ordinance and is working with target to see if they can get private security.
  3. What can we do to help complain?
    - a. cc the other councilmembers when we email Steve's office

with our complaints.

4. There are a lot of volunteer organizations and nonprofits that work on the issue of homelessness, is there any way to determine how we can funnel our resources into the most effective programs?
    - a. The City uses performance metrics to ensure that City funds the programs that are most effective. There is a list of nonprofits on the city's website that meet these criteria.
  5. The city's liabilities for pensions and healthcare coverage are out of control, what are you doing to address it?
    - a. The city is working on adopting fiscal responsibility measures, reorganizing debt, etc.
    - b. The city's actuarial report notes that their SCERS account is 80% funding.
    - c. CalPERS returns have not met their discount rate for several years, so cities will need to contribute more to makeup some of the shortfall. The city is going to talk about extending Measure U so that it can meet this extra demand.
    - d. Currently, the only thing that is really unfunded is the retiree healthcare benefit. The City has been setting aside annually into a trust to help fund that liability.
  6. What is happening with the \$1 million amphitheater project?
    - a. The city has created a technical advisory committee to spearhead the planning and design process. They will be seeking public input early next year.
    - b. There is also a private foundation that has been created to help support the project.
    - c. The city will be seeking funds from the Levitt foundation.
    - d. They are starting from scratch for design and amenities, so if people have input they should participate in the design review process.
  7. Other park news:
    - a. The city will be getting a contribution from PG&E to reforest Land Park. The tree foundation will help develop the reforestation plan. The details are still being worked out, but they're supposed to be getting an agreement soon.
  8. Can we get the police to install pod cameras, pop officers, and shot spotters (which help ID shots fired before the police get a call) in Land Park and Upper Land Park?
    - a. Steve has made a request of the City Manager to get these programs included in the mid-year budget.
- D. Bina Lefkovitz: Bina was just elected to be a trustee of the Sac County Office of Education for our area. She will come back again to talk about her interests and the work of the Sacramento County Office of Education.
- E. PG&E 2018 projects update by Alan Lowman and Sean Valdez (who is taking over for Alan as our area rep).

- i. Sean Valdez can be contacted at [sean.valdez@pge.com](mailto:sean.valdez@pge.com) or (916) 386-5036.
- ii. All existing projects and inspections are complete or nearing completion.
- iii. PG&E is planning to replace roughly 16,500 feet of distribution gas main and 465 services in Land Park in 2018. This work is expected to begin in April and continue through the end of the year. Customers will receive letters notifying them of work on their street prior to construction. Work will take place on the streets below as illustrated by the map:
  - 1. Perkins, Weller, Govan, Marian, Robertson, Regina, Vallejo, Fremont, and Markham Ways.
  - 2. 7<sup>th</sup> and 3<sup>rd</sup> Avenues.
  - 3. 12<sup>th</sup>, 13<sup>th</sup> and 14<sup>th</sup> Streets.
  - 4. Swanston and Land Park Drives.
  - 5. Riverside Boulevard.



### III. Committee Reports and Discussion:

- A. Land Use (*Steve Walker, Chair*) – No update.
- B. Parks (*Pinki Cockrell, Chair*) – **See Attachments**
  - i. Consuelo added that construction on burnt out restroom will begin in February and conclude in April.
- C. Public Safety (*Art Taylor, Chair*) – **See Attachments**
- D. Community Services Committee includes:
  - i. Grant Committee (Lisa Riley) –
    - 1. The Grants Committee received 5 grant applications this year, and recommends that we should donate as follows:
      - a. \$2,500 for Fairytale Town to build the Anansi’s web interactive play set. These funds will be matched by the City, making the total benefit to Fairytale Town \$5,000.
        - i. Lisa moved that the LPCA approve this funding request, Pinki seconded the motion, and the motion was approved unanimously.
      - b. \$1,000 for Restore the Roar to purchase 4 starting blocks for the track
        - i. Lisa moved that the LPCA approve this funding request, Craig seconded the motion, and the motion passed unanimously.
      - c. \$1,500 for the McClatchy Prospector to publish their newspaper.
        - i. Lisa moved that the LPCA approve this funding request, John seconded the motion, and the motion passed unanimously.
      - d. \$1,500 for Land Park Volunteer Corps to purchase the Swanston Fountain Pump. This funding will only be paid when the LPVC has secured the remainder of the funds needed for the project.
        - i. Lisa moved that the LPCA approve this funding request, Stephanie seconded the motion, and the motion passed unanimously.
    - 2. The committee recommended that we not donate \$2500 to the Food Literacy Project, because the application didn’t identify how the funds would be used specifically to benefit the students at Leataata Floyd Elementary. The committee asked the requestor to resubmit their application with this information, but the requestor did not do so.
  - ii. Membership (Joleen Lonigan & Stephanie Duncan, Co-Chairs):
    - 1. Stephanie noted that we currently have about 320 members.
    - 2. We have 10,000 door hangers to distribute throughout the neighborhood. Joleen is working on maps to pass out the door hangers, so that we can begin walking the neighborhood.
  - iii. Communications (Stephanie Duncan, Chair):
    - 1. Stephanie has been sending out emails to members and past members to inform them of events, etc. Quarterly newsletter will be going out in early January.

- E. Executive Committee (*Steve Winlock, Chair*):
  - i. Steve explained that we received two applications for the position of Admin Assistant. The Executive Committee will be meeting to interview the candidates and will make a recommendation to the whole board once that process is complete.

**IV. New Business:**

- A. Comments and Suggestions from Members and Audience
  - i. Can we get an update from SHRA?
    1. Consuelo: SHRA went through the planning process for the Choice Neighborhoods Initiative. SHRA is now going through the Section 106 process with HUD to determine whether there are historically significant structures in the neighborhood. Until they complete that process, which will take about 12-18 months, they will not be moving forward with any more planning.
    2. SHRA was supposed to attend the November LPCA meeting, but had a last minute conflict. The Board will likely reschedule SHRA for the community meeting in February.

**Adjourn: 8:26**

11/15/17

LPCA Treasurer Report

Checking -5222	\$27,693.37
Savings -8623	\$29,121.16
Savings -6487 Rock Garden	\$8,079.00

LPCA FY 2018 Budget  
July 2017-June 2018

Storage Unit	1380
Web Hosting	1200
Committees:	
Parks	500
Membership	1000
Public Safety	500
Land Use	500

Events:	
Egg Hunt	1000
Taste Seed Money	1000
Membership BBQ	2000
Holiday Party	500
Movie in the Park	650

Grants	5000
Clerical/Bookkeeping	4800
Administrative Operations	500
Board Retreat	250
Communications	3550

Food 1500 music 500

admin asst @ 400/mo  
postage, stationary materials

advertising land park news & Inside Publication	1000
copies of monthly agenda for area business	50
Quarterly news letter design & 500 copies	2000
Doorhangers	
postcard ads for area business dsitribution	200
Survey Monkey	300

Revenue	
Membership Fees	7500
TOLP	20000
Total	27500

Sub Total 3550

24330



## November 2017 LPCA Parks Update

1. Stand alone parks committee meetings are held on the second Mondays at 6:30 pm when issues need vetting. Watch the LPCA calendar, or notify chair of your interest.
  - a. If a member has an issue to discuss, please contact the LPCA parks committee through the LPCA Web site at [www.landpark.org](http://www.landpark.org).
  - b. Zoo. Issues in 2018 include the zoo renovation which LPCA needs to ensure preserves LPCA's investment in three statues originally donated as bike racks. We await appointment of a new zoo director before sitting in conversation with the zoo.
  - c. Amphitheater renovation. The city is in the early stages of appointing a technical advisory committee and interested parties possibly establishing a foundation to sustain it. A general interest committee met with Councilman Hansen on October 26<sup>th</sup> which included three LPCA board members, president Steve Winlock, parks chair Pinki Cockrell, and Art Taylor. Ideas formulated and displayed two or more years ago were ideas to begin the conversation and fundraising. The city approved \$1,000,000 at this point. There are some funds now held in Gifts to Share that will be included.
2. Off the Grid at the Zoo discontinued the Thursday evening food truck events by the Zoo.
3. Boat Lake was due to be filled at the beginning of November. As of today, the site is still fenced and the water level is very low. I observed what may be amalgam deterioration at the edge. I requested an update of condition and scheduled opening from the city.
4. The site of the burned Village Green restroom has been cleared, but there is no construction activity. I requested an updated timeline from the city.
5. Park graffiti. The city park supervisor responds to 311 graffiti queries. However, the Land Park Volunteer Corp also has permission to initiate removal ; Rick Stevenson heads the effort and may be contacted through the LPVC.
6. Park Work Day. The final 2017 Land Park Volunteer Corp park work day was postponed due to rain and was rescheduled for Saturday, November 18<sup>th</sup>. Sign in begins at 8:45 for a 9 am work start. Any level of ability welcome! Please help if you can; base camp is the picnic grounds behind Fairytale Town. Complimentary pastries and coffee beforehand, and a lunch for the day's volunteers is at noon.
7. The vegetation at Cervantes Plaza Park in which LPCA invested during reconfiguration now appears healthy after the city responded to our inquiry. The irrigation system was misdirected, possibly due to vandals.

## Nov. 2017-LPCA Public Safety Committee Meeting/Overview

1. LP Dr. & Riverside Blvd. Safety Improvements & Crosswalk Safety-Being researched. We have contacted City of Sacto. Departments who have knowledge of CalTrans Grant, pertaining to studies, which affect Land Park. We have the document to be sent to the City, signed by LPCA.
2. Fall Safety & Security Presentation planned for Nov. 14, 2017, Tuesday, 6:20-8 pm, Crocker Riverside Elem. Auditorium. Presentations include: Sac. PD with Sgt. Brent Kaneyuki, Problem Oriented Policing, Mary Barbara Falcon, Sac PD Training with Neighborhood Watch 101 and Emily Hannon/Katy Grimes, Private Security Patrols. All with Q&A. Questions will be solicited on ND.
3. SHRA Presentation, Nov? LPCA needs to commit to a Statement as to the SHRA Expansion 1200/1500 of the Alder Grove/Marina Vista Land Park Public Housing, with or without the SHRA Tour or Presentation. This is a Land Use and Public Safety issue.
4. Parking by Parents/Friends who drop off & pick up CKM students in marked NO PARKING areas, continues on 7<sup>th</sup>, 8<sup>th</sup> Ave. near Freeport are most impacted. City Parking Enforcement assisting, making positive impact. CKM Principal Lambert now claims he is seeking assistance from Parking Enforcement and Student Advisors.
5. Stephanie can speak to the aftermath of the recent Curtis Park Comm. Assoc. hosting Homeless Presentation,. Just recently, Sacto. Mayor and County Board agreed on amount to City of Sacto. What's next?
6. Issues noted with the Boat Pond. The Pond project has almost been completed, with a pond liner, that was not required, over budget and deepest portion is 9'. It could be considered a safety hazard and fiscal example of City's lack of supervision in the build.

## LPCA QUESTIONS TO SHRA 9/17

1. What portions of the SHRA's TRANSPARENCY STATEMENT does SHRA abide by?

### Transparency

Sacramento Housing and Redevelopment Agency is committed to openness, transparency, accountability and responsiveness as we work to provide a broad range of services and programs for residents and communities in the City and County of Sacramento.

We highly value the public's trust in our performance as a public agency. We seek to inform and engage all stakeholders in our communities and neighborhoods by providing timely information and access to reports, documents, and opportunities which will enable the public to take an active role in the decision making process.

2. Upper Land Park (ULP) is already absorbing an abnormally high number of PH Units, in which the 751 units of the LP PH make up 44% of Sacramento's PH. Per the national standard of what is considered healthy for a community, how is increasing this number going to enrich the lives of those impacted?

3. Should Sacramento PD have a presence or sub-station at the LP PH in ULP as they did in the past. Why or why not?

4. Do you agree that the existing over-concentrated public housing in this one little area has caused decades of major problems and costs for this community and Sacramento. Why or why not?

5. All across this country, States are moving towards more modern and successful subsidized housing models for the poor, including scatter site and housing voucher programs that integrate low income in a number of economically viable communities, with smaller numbers in any one area. Should these more modern and successful models be used? Why or why not?

6. How many and where are the other affordable housing and public housing units throughout the City?

7. Will equal size units for Homeless/Low/ No income/large families be available at the relocation sites, and in the final inventory of the rebuilt neighborhood? (The report indicated smaller units.)

8. Why has Land Park specifically been designated to receive this expansion?

9. Is it likely, or not, that money for this project expansion will be included in the projected HUD agency budget given the current emphasis for more infrastructure and defense spending by the current Administration?

10. In addition to the questions set forth I would want to know if SHRA has considered the impact on the local schools of the addition of 400-600 new homes and how many children would there be in each of the schools-elementary, middle and high school?

11. How many Market Rate vs. Affordable vs. Public Housing vs. Homeless Units will there be in the finished product, breakdown of each?



Together, Building  
a Better California

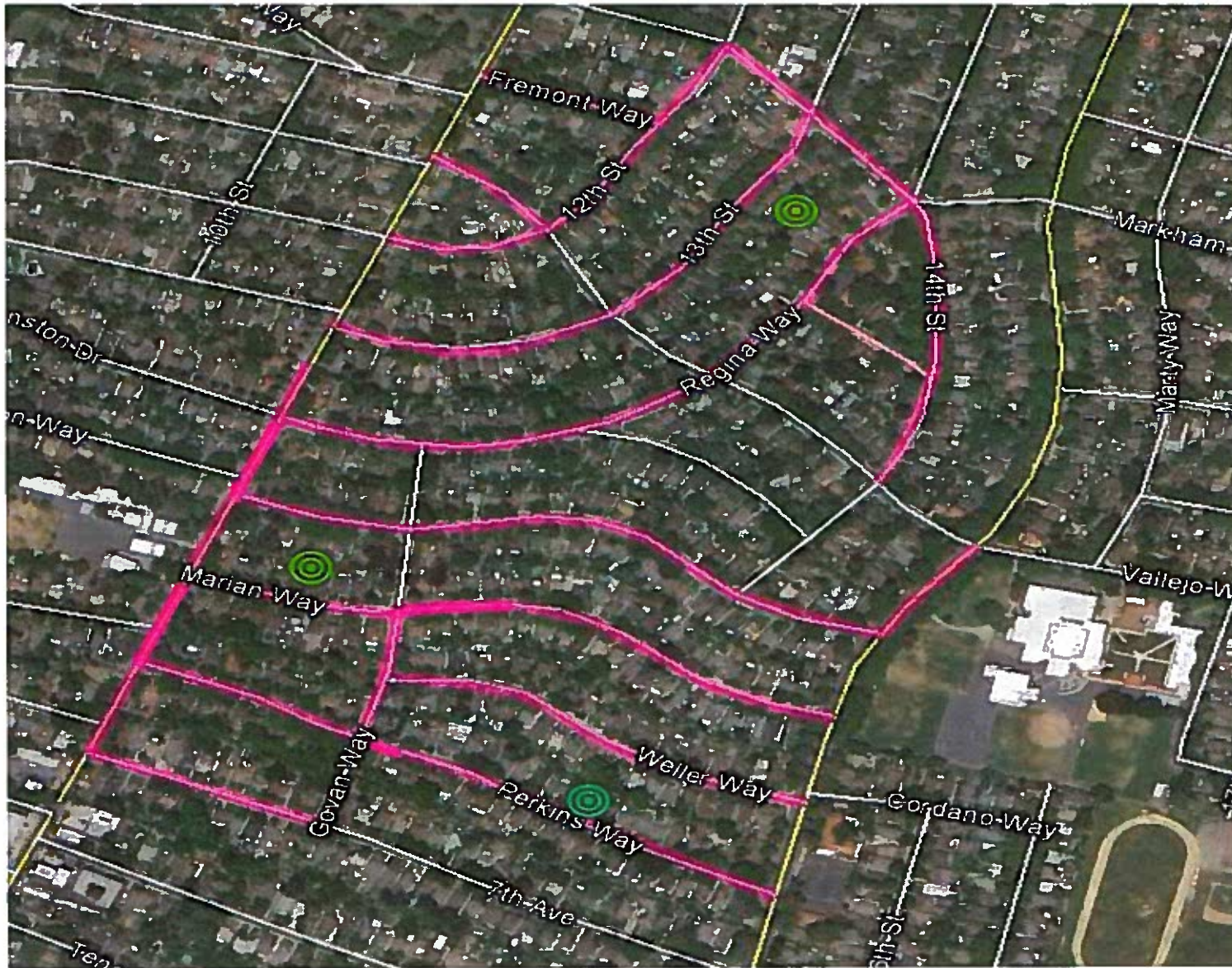
Sean Valdez

Sacramento Division Local Customer Experience

[sean.valdez@pge.com](mailto:sean.valdez@pge.com)



# 2018 Proposed Scope





## 2018 Gas Pipeline Replacement Project

PG&E is planning to replace roughly 16,500 ft. of distribution gas main and 465 services in the Land Park Community. This work is expected to begin in April and continue through the end of the year. Customers will receive letter notification prior to construction. Work will take place on the streets below.

- Perkins, Weller, Govan, Mirian, Robertson, Regina, Vallejo, Fremont, and Markham Ways
- 7<sup>th</sup>, 3<sup>rd</sup> Avenues
- 12<sup>th</sup>, 13<sup>th</sup>, and 14<sup>th</sup> Streets
- Swanston and Land Park Drives
- Riverside Boulevard



# Outreach Material Examples



Please pardon our dust.

Please pardon our dust. PG&E is working to repair and upgrade the natural gas system near you. Thank you for your patience while we ensure the safety and integrity of pipelines in your community.

**Notify your neighbors in advance**  
• Schedule Pipeline Safety notices and starting activities and activities in advance to allow for proper planning.  
• Do Pipeline Safety notices in advance of the start of work.  
• Notify your neighbors in advance of the start of work.

**How to register**  
• Register with PG&E at the start of work.  
• Register with PG&E at the start of work.

**How to register**  
• Register with PG&E at the start of work.

**How to register**  
• Register with PG&E at the start of work.

## Pipeline Safety in Your Community Replacing Pipelines

As part of our safety, maintenance program to ensure the safety of our natural gas system, PG&E is replacing sections of our natural gas system. This is a necessary part of our safety and maintenance program to ensure the safety and integrity of our natural gas system.

- **Notify your neighbors** in advance of the start of work.
- **Register with PG&E** at the start of work.
- **Do Pipeline Safety notices** in advance of the start of work.
- **Notify your neighbors** in advance of the start of work.

- **Notify your neighbors** in advance of the start of work.
- **Register with PG&E** at the start of work.
- **Do Pipeline Safety notices** in advance of the start of work.
- **Notify your neighbors** in advance of the start of work.

- **Notify your neighbors** in advance of the start of work.
- **Register with PG&E** at the start of work.
- **Do Pipeline Safety notices** in advance of the start of work.
- **Notify your neighbors** in advance of the start of work.

- **Notify your neighbors** in advance of the start of work.
- **Register with PG&E** at the start of work.
- **Do Pipeline Safety notices** in advance of the start of work.
- **Notify your neighbors** in advance of the start of work.

- **Notify your neighbors** in advance of the start of work.
- **Register with PG&E** at the start of work.
- **Do Pipeline Safety notices** in advance of the start of work.
- **Notify your neighbors** in advance of the start of work.



## We are replacing sections of natural gas pipelines

Thank you for your patience while we modernize and improve the safety of our natural gas system.

### We're happy to answer your questions

- To learn about our natural gas system, visit [www.pgandeg.com/gas](http://www.pgandeg.com/gas)
- Call our Gas System Help Line for information on our natural gas system at 1-888-743-7431
- Call our Customer Service Line for general questions at 1-800-743-5000



## Pipeline Safety in Your Community

### PG&E Gas Safety Project

## Hydrostatic Pressure Testing Verifying the safe pipeline operating pressure and identifying any areas for repair

Thank you for your patience while we work as quickly and safely as possible.

- Contact us with questions or concerns
- To learn about our natural gas system, visit [www.pgandeg.com/gas](http://www.pgandeg.com/gas)
  - For information on fieldwork and pipeline safety programs, call our Gas System Help Line at 1-888-743-7431
  - For general questions, call our Customer Service Line at 1-800-743-5000 at any time



## Focusing on Gas Safety Excellence

### Our Pipeline Maintenance

Every day we perform a number of different maintenance activities to ensure the safe operation of our transmission pipelines. We immediately address any public safety threat or issue. We do not delay or defer work that is necessary for public safety.

PG&E, under the oversight of regulatory agencies, performs the following maintenance activities for gas transmission pipelines. We use a combination of preventative, corrective and/or condition-based maintenance.

- Leak Survey**  
We survey our transmission pipelines for leaks at least once per calendar year. Distribution pipelines are surveyed for leaks at least once every five years.
- Pipeline Patrols**  
Our transmission pipelines are patrolled by air or on the ground every quarter.
- Corrosion Prevention**  
We use cathodic protection systems on our pipelines to control corrosion and prevent rust.
- Identification Of Natural Gas**  
We add a sulfur-like odor to natural gas and periodically test to verify proper odor levels.
- Pipeline Integrity Assessment**  
In addition to the methods and tools described above, we use other methods to assess the integrity of our pipelines.



Natural gas pipeline work is starting soon at your neighborhood

PG&E is working to repair and upgrade the natural gas system near you. Thank you for your patience while we ensure the safety and integrity of pipelines in your community.

PG&E is working to repair and upgrade the natural gas system near you. Thank you for your patience while we ensure the safety and integrity of pipelines in your community.

PG&E is working to repair and upgrade the natural gas system near you. Thank you for your patience while we ensure the safety and integrity of pipelines in your community.

PG&E is working to repair and upgrade the natural gas system near you. Thank you for your patience while we ensure the safety and integrity of pipelines in your community.

PG&E is working to repair and upgrade the natural gas system near you. Thank you for your patience while we ensure the safety and integrity of pipelines in your community.

PG&E is working to repair and upgrade the natural gas system near you. Thank you for your patience while we ensure the safety and integrity of pipelines in your community.

PG&E is working to repair and upgrade the natural gas system near you. Thank you for your patience while we ensure the safety and integrity of pipelines in your community.

PG&E is working to repair and upgrade the natural gas system near you. Thank you for your patience while we ensure the safety and integrity of pipelines in your community.

PG&E is working to repair and upgrade the natural gas system near you. Thank you for your patience while we ensure the safety and integrity of pipelines in your community.

PG&E is working to repair and upgrade the natural gas system near you. Thank you for your patience while we ensure the safety and integrity of pipelines in your community.